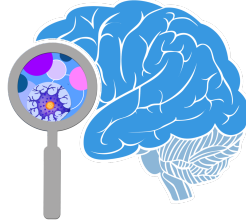


Have you been diagnosed with *schizophrenia* or *schizoaffective disorder*?

If so, you may be eligible to participate in a *brain imaging neurofeedback study*

Study Title: The effects of neurofeedback on social information processing

Principal Investigator: David Dodell-Feder, Ph.D., Department of Psychology, University of Rochester



What's the study? We are researchers at the University of Rochester investigating the effects of neurofeedback delivered through MRI on social information processing.

Who is eligible? Individuals ages 18-65, fluent in English, no major medical/neurological problems, on stable medication regimen with diagnosis of schizophrenia or schizoaffective disorder.

What's involved? There are 3 parts to the study:

1. Pre-neurofeedback clinical, cognitive, and behavioral assessment (\$10/hour, 4-6 hours)
2. Magnetic resonance imaging (MRI) neurofeedback scans (\$20/hour, 5 sessions within 2- to 3-week period, 2-3 hours/session)
3. Post-neurofeedback cognitive and behavioral assessment (\$10/hour, 1-3 hours)

CONTACT US

If you are interested in participating or learning more about the study, please contact us at **585-276-6976** or at **rochester.neurofeedback@gmail.com**

OR

Complete our online version of the eligibility screen using this link or the QR code

<https://is.gd/SCPscreening>

UR Neurofeedback Study
585-276-6976
rochester.neurofeedback@gmail.com

UR Neurofeedback Study
585-276-6976
rochester.neurofeedback@gmail.com

UR Neurofeedback Study
585-276-6976
rochester.neurofeedback@gmail.com

UR Neurofeedback Study
585-276-6976
rochester.neurofeedback@gmail.com

UR Neurofeedback Study
585-276-6976
rochester.neurofeedback@gmail.com

UR Neurofeedback Study
585-276-6976
rochester.neurofeedback@gmail.com

UR Neurofeedback Study
585-276-6976
rochester.neurofeedback@gmail.com

UR Neurofeedback
Study

585-276-6976



<https://is.gd/SCPscreening>