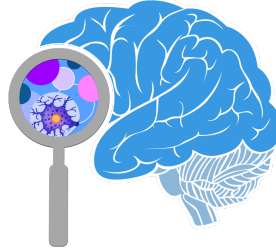


# Individuals needed for a *brain imaging neurofeedback* research study

*Study Title:* The effects of neurofeedback on social information processing  
*Principal Investigator:* David Dodell-Feder, Ph.D., Department of Psychology, University of Rochester



**What's the study?** We are researchers at the University of Rochester investigating the effects of neurofeedback delivered through MRI on social information processing.

**Who is eligible?** Individuals ages 18-65, fluent in English, no major medical, neurological, psychiatric problems.

**What's involved?** There are 3 parts to the study:

1. Pre-neurofeedback clinical, cognitive, and behavioral assessment (\$10/hour, 4-6 hours)
2. Magnetic resonance imaging (MRI) neurofeedback scans (\$20/hour, 5 sessions within 2- to 3-week period, 2-3 hours/session)
3. Post-neurofeedback cognitive and behavioral assessment (\$10/hour, 1-3 hours)

## CONTACT US

If you are interested in participating or learning more about the study, please contact us at **585-276-6976** or at **rochester.neurofeedback@gmail.com**

OR

Complete our eligibility screen using this link or the QR code below:

<https://is.gd/SCPscreening>

UR Neurofeedback Study  
585-276-6976  
rochester.neurofeedback@gmail.com

UR Neurofeedback Study  
585-276-6976  
rochester.neurofeedback@gmail.com

UR Neurofeedback Study  
585-276-6976  
rochester.neurofeedback@gmail.com

UR Neurofeedback Study  
585-276-6976  
rochester.neurofeedback@gmail.com

UR Neurofeedback Study  
585-276-6976  
rochester.neurofeedback@gmail.com

UR Neurofeedback Study  
585-276-6976  
rochester.neurofeedback@gmail.com

UR Neurofeedback Study  
585-276-6976  
rochester.neurofeedback@gmail.com

**UR Neurofeedback Study**

585-276-6976



<https://is.gd/SCPscreening>